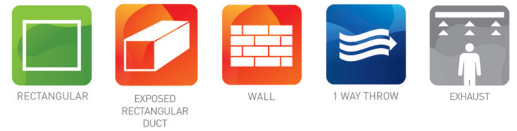


G-170

STEEL WALL GRILLE WITH FIXED VANES FOR EXHAUST



VARIANTS

G-170

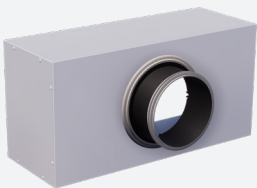
The grille is used for the exhaust of air in facilities such as offices, warehouses, shopping centres, ... The grille can be used for wall, ceiling or exposed duct mounting. Fixed horizontal vanes with 40° deflection. Execution in steel, standard finish painted white (RAL9010).

Exhaust grille with fixed horizontal vanes with 40° deflection

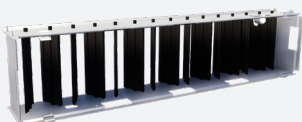
Center distance between vanes 16,7mm

Easy to install

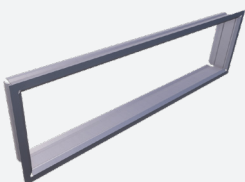
ACCESSORIES



OP100



GT007



GR001

TECHNICAL INFORMATION

| | | |
|--------------|-------------------------------|----------------------------------------------------------|
| APPLICATION | Type | Exhaust |
| | Direction | Fixed horizontal vanes with 40° deflection |
| CONSTRUCTION | Center distance between vanes | 16,7mm |
| | Min. length | 100mm |
| | Max. length | 1250mm |
| | Available steps in length | 25mm |
| | Min. height | 75mm |
| | Max. height | 900mm |
| | Available steps in height | 25mm |
| | Installation depth | 29mm -> 43mm |
| MATERIAL | Standard material | Painted steel |
| | Standard finishing | Powder coating RAL9010 |
| | Product finishing options | Powder coating RAL of choice, unpainted galvanised steel |
| MOUNTING | Mounting options | Friction springs, concealed screw fixing, screw fixing |

QUICK SELECTION

| Exhaust Q _v [m³/h] | | L [mm] | | | | | | | |
|-------------------------------|----------------|--------|-----|-----|-----|-----|------|------|------|
| H [mm] | L _w | 200 | 250 | 300 | 400 | 500 | 600 | 800 | 1000 |
| 100 | 25 dB(A) | 102 | 119 | 157 | 183 | 227 | - | - | - |
| | 35 dB(A) | 135 | 157 | 209 | 244 | 303 | - | - | - |
| 150 | 25 dB(A) | - | 183 | 227 | 289 | 356 | 406 | 553 | - |
| | 35 dB(A) | - | 244 | 303 | 388 | 473 | 541 | 731 | - |
| 200 | 25 dB(A) | - | - | - | 406 | 481 | 553 | 702 | 906 |
| | 35 dB(A) | - | - | - | 541 | 639 | 731 | 935 | 1204 |
| 300 | 25 dB(A) | - | - | - | - | 702 | 807 | 1066 | 1333 |
| | 35 dB(A) | - | - | - | - | 935 | 1083 | 1424 | 1790 |

PRODUCT KEY

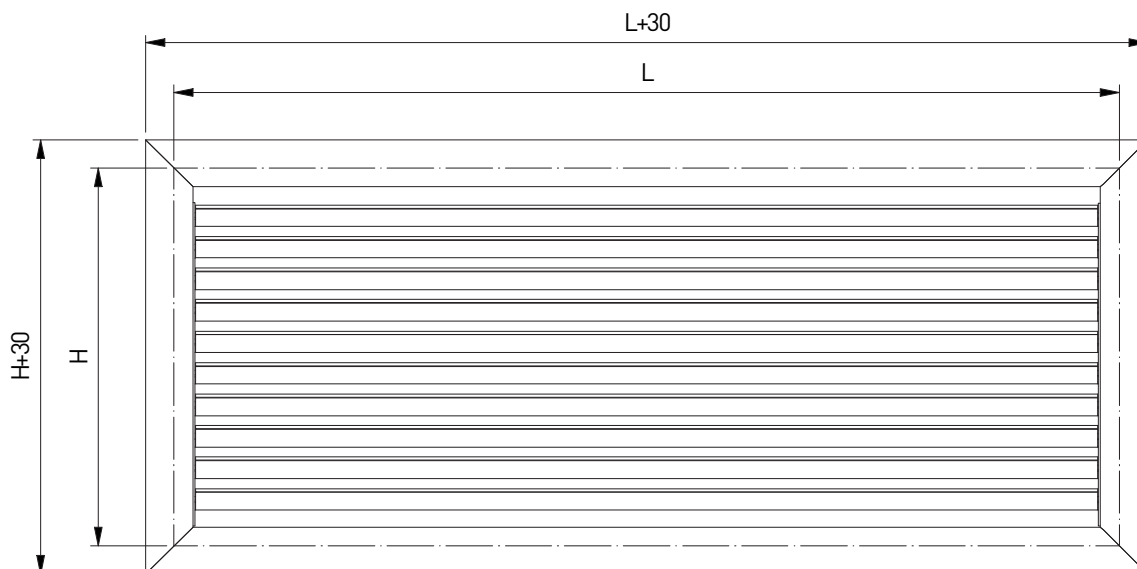
GRILLE

| | | | | | | | | | | | | | | |
|---|---|---|---|---|---|---|---------------------------------------------------------------------------------------------------------------------------|---|---|---|---------------------------------------------------------|---|---|---|
| G | D | 1 | 7 | 0 | - | F | 0 | 6 | 0 | 0 | 0 | 3 | 0 | 0 |
| | | | | | | | Nominal length L (mm): From 100 to 1250mm, per 25mm | | | | Nominal height H (mm): From 75 to 900mm, per 25mm | | | |
| | | | | | | | -: Galvanised F: Coated | | | | | | | |
| | | | | | | | 0: Grille without damper 7: With damper GT007 | | | | | | | |
| | | | | | | | D: Frame width 25mm, friction springs E: Frame width 25mm, concealed screw fixing F: Frame width 25mm, screw fixing | | | | | | | |

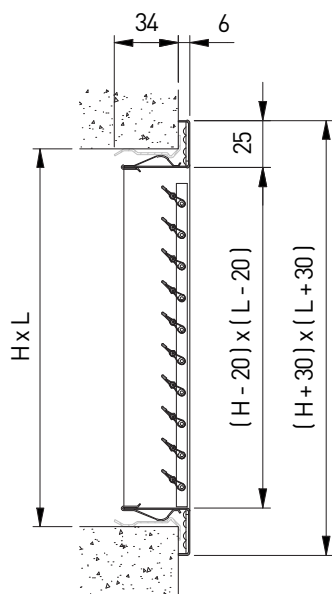
- GT007 only available for heights from 100 to 600mm, per 25mm

MOUNTING FRAME

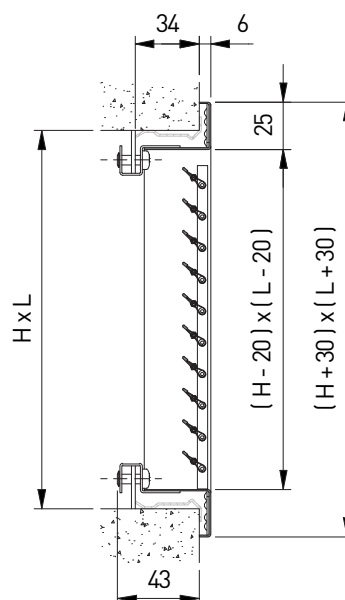
| | | | | | | | | | | | | | | |
|---|---|---|---|---|---|---|----------------------------------------------------------|---|---|---|---------------------------------------------------------|---|---|--|
| G | R | 0 | 0 | 1 | - | 0 | 6 | 0 | 0 | 0 | 3 | 0 | 0 | |
| | | | | | | | Nominal length L (mm): From 75 to 2000mm, per 1mm | | | | Nominal height H (mm): From 50 to 2000mm, per 1mm | | | |
| | | | | | | | -: In one piece E: End piece M: Intermediate piece | | | | | | | |



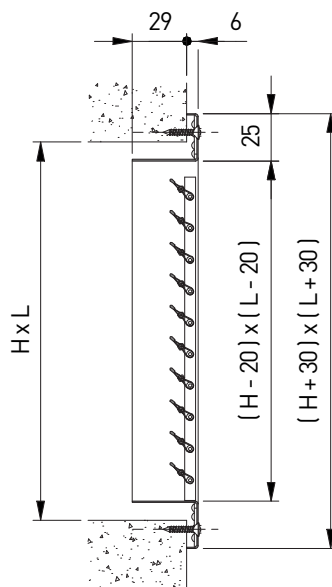
GD170 + GR001



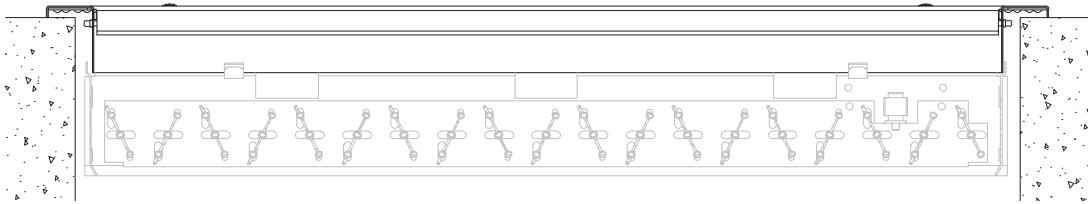
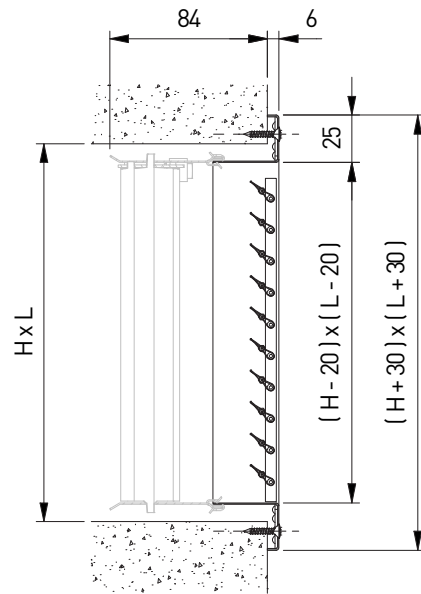
GE170 + GR001



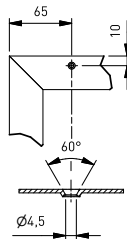
GF170



GF177



SCREW HOLE LOCATION IN THE FRAME



| Nom. H | Nom. L 150 | 525 | 1025 | 1500 | 2000 |
|--------|------------|-----|------|------|------|
| 150 | | | | | |
| 525 | | | | | |
| 1000 | | | | | |