

# DE100

## ROUND CEILING DIFFUSER WITH ADJUSTABLE CORE



### VARIANTS

DE100, DE100P

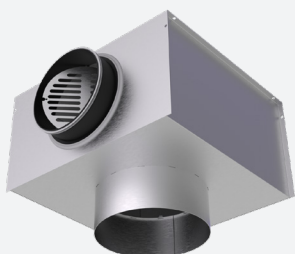
The diffuser type DE100 is used for the supply and exhaust of cooled or heated air in facilities such as offices, shopping centres, workshops, factory halls, ... The diffuser can be used for ceiling or exposed duct mounting, especially in installations where an adjustable pattern is required (horizontally-vertically). Suitable for mounting at higher altitudes because of its adjustable pattern.

**Circular diffuser with adjustable air pattern (horizontal-vertical).**

**Suitable for mounting at higher altitudes because of its adjustable air pattern.**

**The diffuser can be used for ceiling or exposed duct mounting.**

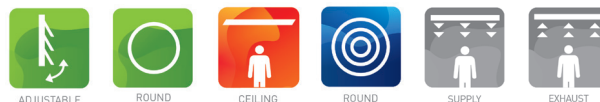
### ACCESSORIES



DP150S



DT004



### TECHNICAL INFORMATION

APPLICATION	Type	Supply or exhaust
	Airflow direction	Adjustable horizontal or vertical
CONSTRUCTION	Frontplate	Round, removable core, adjustable in 4 positions
	Available nominal diameters	Ø160, 200, 250, 315, 355, 400mm
MATERIAL	Standard material	Steel
	Standard finishing	Powder coating RAL9010
	Product finishing options	Powder coating RAL of choice
MOUNTING	Mounting options	Mounting by screws through diffuser collar or mounting brackets

### QUICK SELECTION

Supply Qv [m³/h]		
ØN [mm]	L <sub>w</sub>	
160	25 dB(A)	138
	35 dB(A)	202
200	25 dB(A)	235
	35 dB(A)	348
250	25 dB(A)	366
	35 dB(A)	537
315	25 dB(A)	514
	35 dB(A)	753
355	25 dB(A)	681
	35 dB(A)	998
400	25 dB(A)	864
	35 dB(A)	1264

## PRODUCT KEY

## ROUND CEILING DIFFUSER WITH ADJUSTABLE CONES

D	E	1	0	0	-	F	0	2	5	0
---	---	---	---	---	---	---	---	---	---	---

Nominal diameter N (mm):  
160, 200, 250, 315, 355, 400

F: Coated

-: Standard

0: Without mounting brackets, fixation by screws in collar of diffuser  
1: With 3 mounting brackets and screws (max. Ø315)

0: Cascading setting  
2: Stepless setting (max. Ø315)

## ROUND CEILING DIFFUSER WITH ADJUSTABLE CONES FOR LAY-IN IN MODULAR CEILING SYSTEMS

D	E	1	0	0	P	F	0	2	5	0	0	5	9	4
---	---	---	---	---	---	---	---	---	---	---	---	---	---	---

Nominal diameter N (mm):  
160, 200, 250, 315

Panel size (mm):  
594

F: Coated

P: Mounted on panel with 4 raised edges of 10 mm  
Z: Mounted on panel with 4 sides fine line 5/8

0: Without mounting brackets, fixation by screws in collar of diffuser

0: Cascading setting  
2: Stepless setting

## PLENUM FOR ROUND CEILING DIFFUSER

D	P	1	5	0	S	-	-	0	0	2	5	0	0	2	0	0
---	---	---	---	---	---	---	---	---	---	---	---	---	---	---	---	---

Nominal diameter N (mm):  
160, 200, 250, 315, 355, 400

Connection diameter D (mm):  
125, 160, 200, 250, 315, 355

0: Without mounting straps  
1: With mounting straps

-: Without damper  
D: With damper

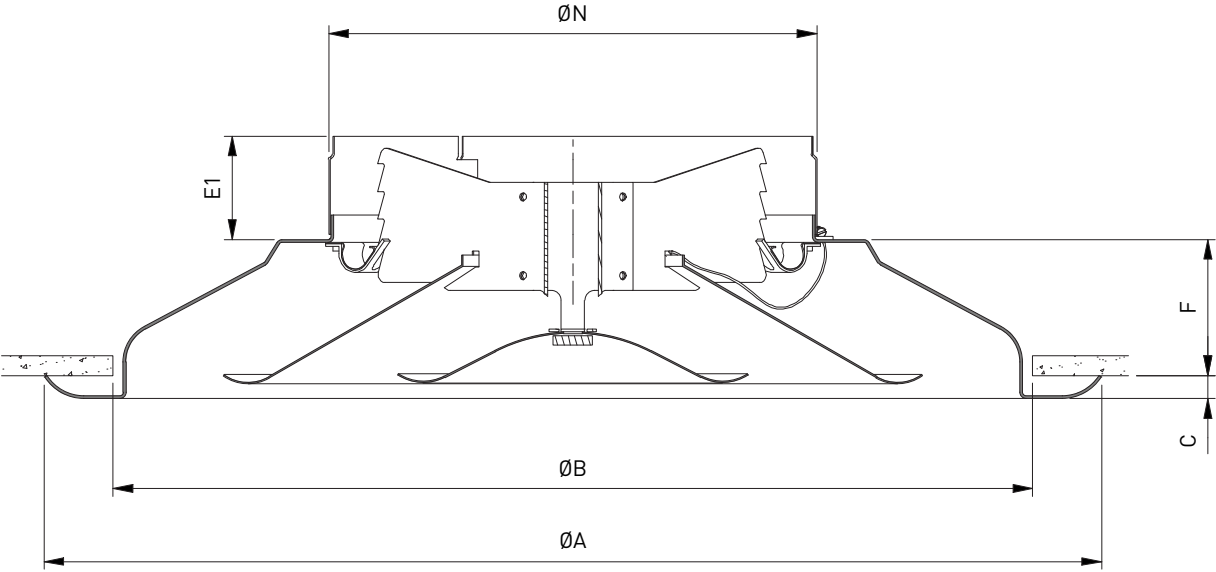
-: Non insulated plenum  
G: Insulated plenum  
H: Half insulated plenum

S: Side connection

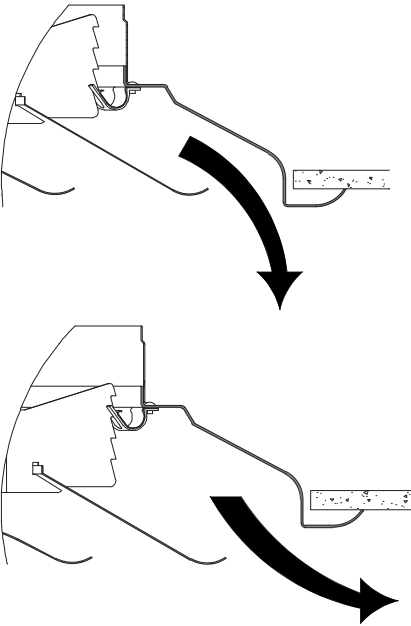
## VOLUME CONTROL

D	T	0	0	4	0	2	5	0
---	---	---	---	---	---	---	---	---

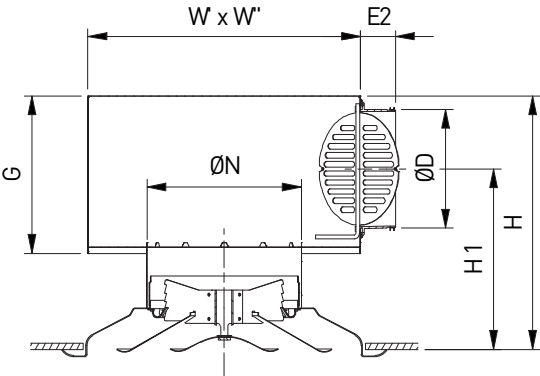
Nominal diameter N (mm):  
160, 200, 250, 315, 355, 400



AIRFLOW DIRECTION, POSITION FRONTPLATE



DE100 + DP150S

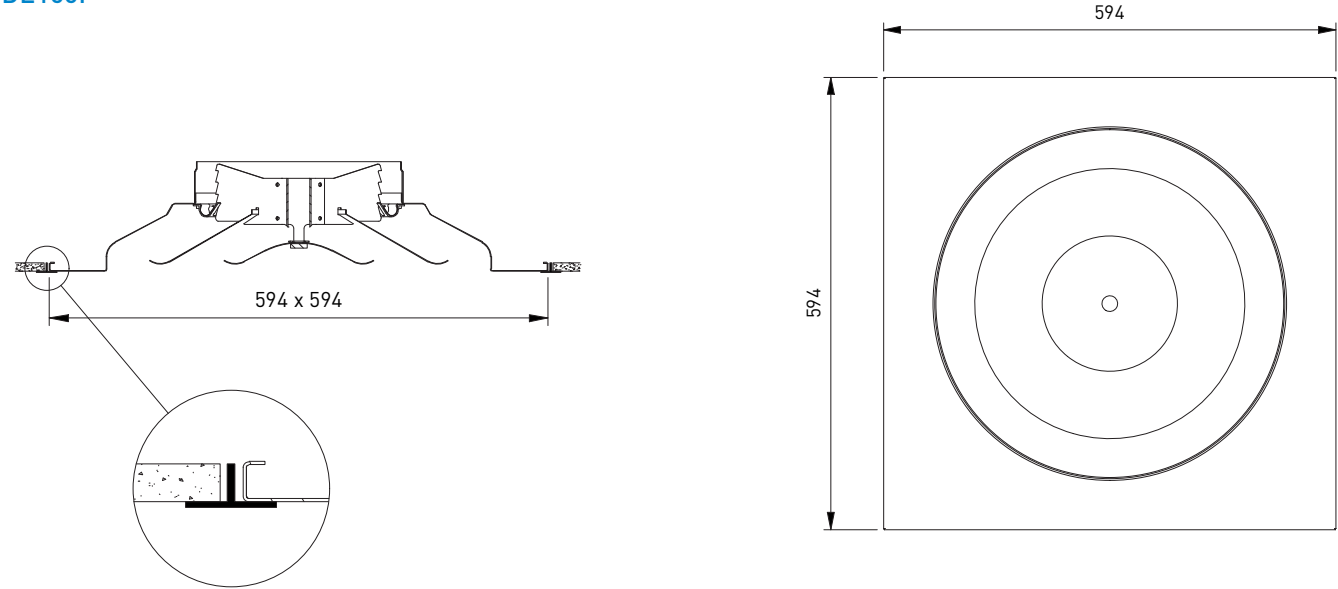


DIMENSIONS

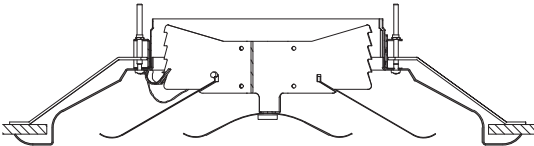
ØN	ØA	ØB	C	ØD	F	E1	E2	G	H	H1	W'xW''
160	321	279	11	125	36	51	58	185	311	228	325x351
200	429	375	11	160	50	51	58	220	360	260	375x401
250	537	467	12	200	69	51	58	260	419	299	450x476
315	645	557	15	250	80	51	78	310	480	335	500x526
355	746	648	17	250	97	51	78	310	497	360	500x526
400	864	740	21	315	107	51	49	375	572	403	600x626

All dimensions in mm

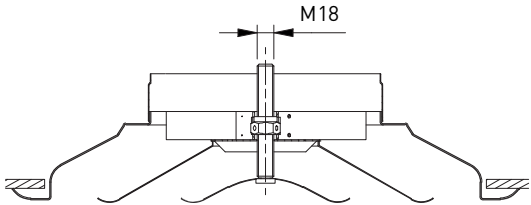
DE100P



DE101



DE120



DE100 + DT004

