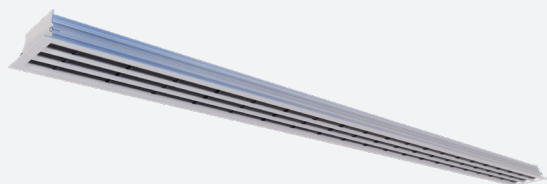


RT350

ALUMINIUM DRUM SLOT DIFFUSER WITH FLANGE AND DIRECT MOUNTING



VARIANTS

RT350, RT350S, RT350A

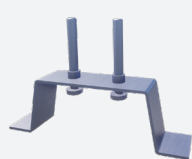
The drum slot diffuser is suitable for the supply and exhaust of cooled and heated air. The slot is fitted with air direction elements which can be individually adjusted. These specially developed air direction elements (drums) ensure an ideal and stable air diffusion pattern as well as a low noise level. There is a high level of induction and air stream penetration in the room. All lengths are available.

Slot diffuser with adjustable polypropylene air direction elements (Drum length=150mm, Slot width=14mm)

Fixed plenum mounting

Wide temperature range for both heating and cooling

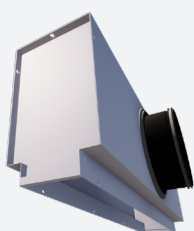
ACCESSORIES



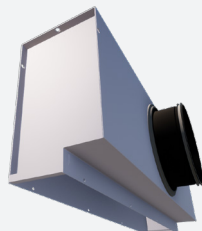
RT000



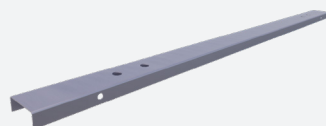
RT010



RP300S



RP300A



BOBRT



ADJUSTABLE



LINEAR



CEILING



2 WAY THROW



1 WAY THROW



LINEAR



SUPPLY



EXHAUST

TECHNICAL INFORMATION

APPLICATION	Airflow direction	Lateral, left/right adjustable
	Airflow type	Lineair, exhaust or supply
CONSTRUCTION	Shape	Lineair
	Min. Length	300mm
	Max. length	2000mm
	Available steps in length	1mm
	Number of slots	1,2,3,4,5,6
	Flange size	12mm
	Slot width	13,5mm
	Installation depth	39mm
	Panel width (RT350_P)	Standard 300mm
MATERIAL	Standard material	Extruded aluminium
	Standard finishing	Satin anodized 11µm
	Product finishing options	Powder coating RAL
	Drums	ABS
	Panel	Powder coated steel sheet metal
MOUNTING	Mounting option	With brackets RT (without plenum) or fixed mounting on the plenum box RP300
PLENUM	Material	Galvanised (275g/m ²) steel sheet, PP/TPE spigot
	Optional insulation	Melamine 6mm
	Spigot	Class D spigot with double lip seal
	Volume control	Optional perforated volume flow control disk inside the spigot
	Mounting options	Mounting eyes (Ø7mm) standard, mounting brackets available upon request

QUICK SELECTION

Supply Q _v [m³/h]		L [mm]			
	L _w	600	1000	1500	2000
RT351	25 dB(A)	55	85	118	149
	35 dB(A)	79	121	169	213
RT352	25 dB(A)	93	143	198	250
	35 dB(A)	133	204	283	357
RT353	25 dB(A)	132	202	281	355
	35 dB(A)	188	289	402	507
RT354	25 dB(A)	155	238	330	417
	35 dB(A)	222	340	473	597
RT355	25 dB(A)	200	307	427	539
	35 dB(A)	286	439	610	770
RT356	25 dB(A)	222	341	473	597
	35 dB(A)	318	488	678	855

EFFECTIVE AIR DISCHARGE AREA

Supply A _k [m²/m]	RT351	RT352	RT353	RT354	RT355	RT356
	0.0111	0.0179	0.0247	0.0315	0.0383	0.0451

PRODUCT KEY

DRUM SLOT DIFFUSER WITH FLANGE RT350

R	T	3	5	2	-	-	1	2	0	0	0	0	0	0	0	0
---	---	---	---	---	---	---	---	---	---	---	---	---	---	---	---	---

Slot length L (mm):
From 300 to 2000mm, per
1mm

Panel size (mm):
From 350 to 2060, per 1mm

-: Naturel anodised (not for P, Z and C)
F: Coated

-: Standard
C: Corner section 90° (300 x 300 mm)
E: End piece
M: Intermediate piece
P: Panel with 4 raised edges of 10 mm
Z: Panel with 2 sides fine line 5/8 on the short side and 2 raised edges of 10 mm on the long side

1: 1 slot
(1 to 6 slots)

35: Diffuser with flange - for fixed mounting on the plenum box

T: Supply - black air direction elements
W: Supply - white air direction elements
A: Exhaust - without air direction elements

PLENUM RP300 FOR DIRECT MOUNTING

R	P	3	0	2	-	S	-	-	0	0	1	6	0	1	2	0	0
---	---	---	---	---	---	---	---	---	---	---	---	---	---	---	---	---	---

Nominal diameter (mm):
80, 100, 125, 160, 200, 250,
315, 355, 400
Slot length ≤1600: 1 diam-
eter
Slot length ≥1601: 2 diam-
eters

Slot length L (mm):
From 300 to 2000mm, per
1mm

0: Without mounting straps
1: With mounting straps

-: Without damper
D: With damper

-: Non insulated plenum
G: Insulated plenum
H: Half insulated plenum

S: Side connection
A: Asymmetric

-: Standard
L: End piece left (looking at plenum front into the inlet of the connection collar)
M: Intermediate piece
R: End piece right (looking at plenum front into the inlet of the connection collar)

1: 1 slot
(1 to 6 slots)

30: Plenum for fixed mounting on diffuser

DRUM SLOT DIFFUSER RT350 WITH PLENUM RP300 (DIRECT MOUNTING)

R	T	3	5	2	-	-	S	-	-	0	1	2	0	0	0	0	0	0	0
											Slot length L (mm): From 300 to 2000mm, per 1mm				Panel size (mm): From 350 to 2060, per 1mm				
											0: Without mounting straps 1: With mounting straps								
											-: Without damper D: With damper								
											-: Non insulated plenum G: Insulated plenum H: Half insulated plenum								
											S: Side connection A: Asymmetric								
											-: Naturel anodised (not for P, Z and C) F: Coated								
											-: Standard L: End piece left (looking at plenum front into the inlet of the connection collar) M: Intermediate piece R: End piece right (looking at plenum front into the inlet of the connection collar) P: Panel with 4 raised edges of 10 mm Z: Panel with 2 sides fine line 5/8 on the short side and 2 raised edges of 10 mm on the long side								
											1: 1 slot (1 to 6 slots)								
											35: Diffuser with flange - fix mounted on the plenum box								

T: Supply - black air direction elements

W: Supply - white air direction elements

A: Exhaust - without air direction elements

DUMMY PLATE BOBRT FOR DRUM SLOT DIFFUSER RT350 (MOUNTING IN COMBINATION WITH MOUNTING BRACKETS RT000)

B	O	B	R	T	0	2	1	2	0	0
							Length dummy plate (mm): From 20 to 2000mm, per 1mm			
							1: 1 slot (1 to 6 slots)			

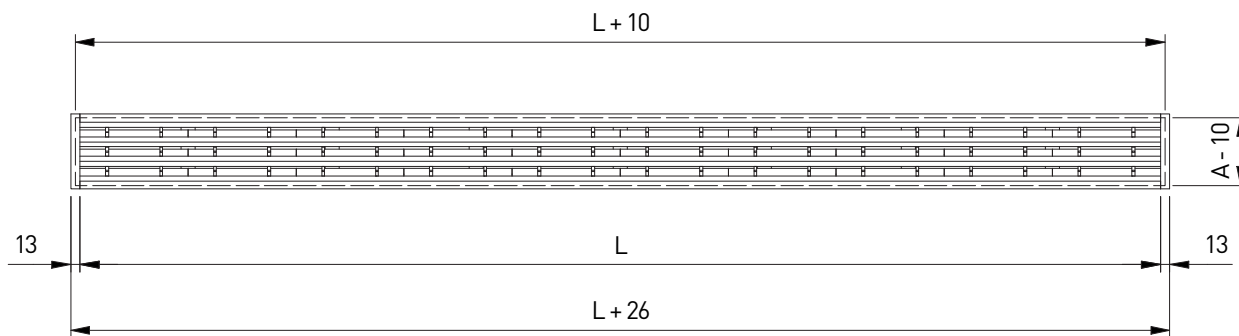
MOUNTING BRACKET RT000 FOR MOUNTING DUMMY PLATE BOBRT ON DRUM SLOT DIFFUSER RT350

R	T	0	0	2
				1: 1 slot [1 to 6 slots] Slot length <=1200: 2 brackets Slot length >=1201: 3 brackets

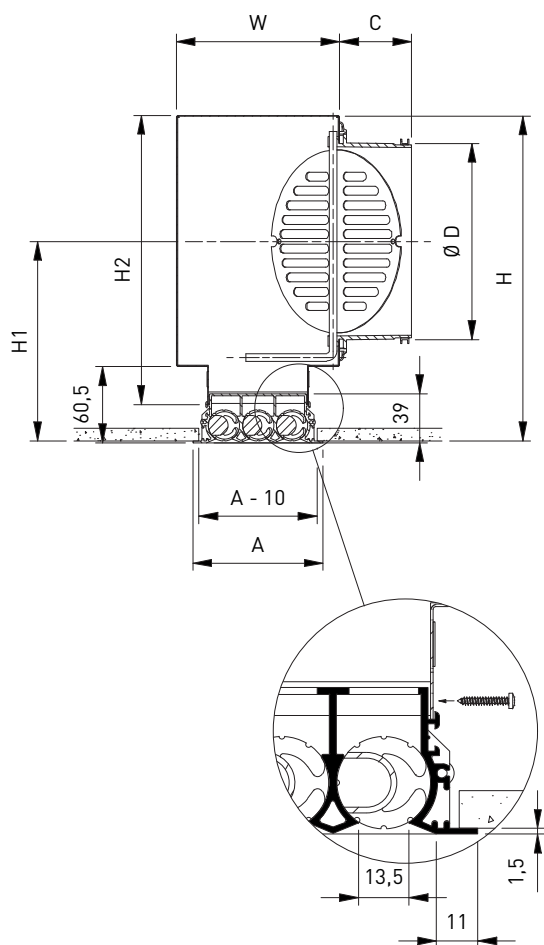
MOUNTING BRACKET RT010 FOR CEILING MOUNTING DRUM SLOT DIFFUSER RT350 (WITHOUT PLENUM)

R	T	0	1	2
				1: 1 slot (1 to 6 slots) Slot length <=1200: 2 brackets Slot length >=1201: 3 brackets

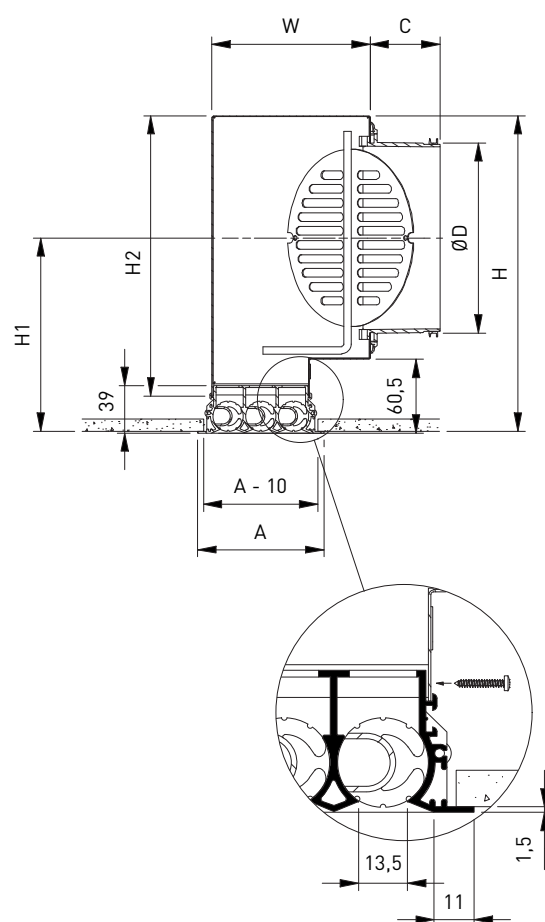
CEILING OPENING: L+10 x A-10



RT35 + RP30_S



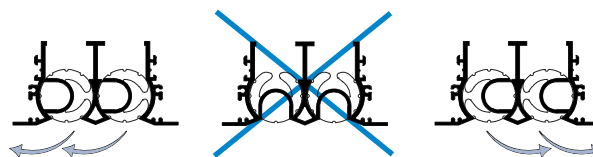
RT35 + RP30_A



DIMENSIONS

	Number of slots - RT35 + RP30_S/A					
	1	2	3	4	5	6
A	50	77	104	131	161	188
C	58	58	58	58	78	50
ØD	123	158	158	198	248	313
H	225	260	260	300	350	415
H1	142	159	159	179	204	245
H2	195	230	230	270	320	385
W	75	102	129	156	186	213

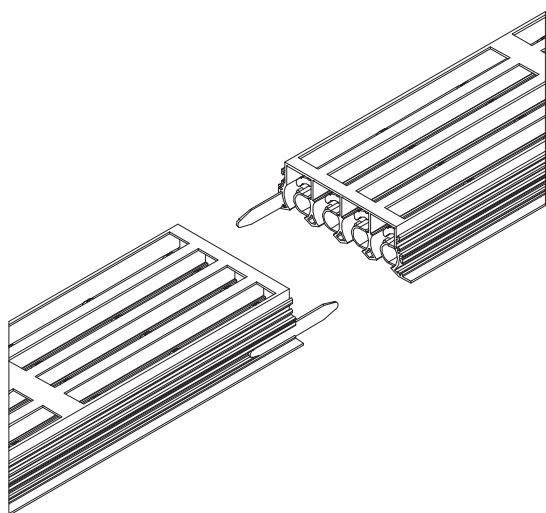
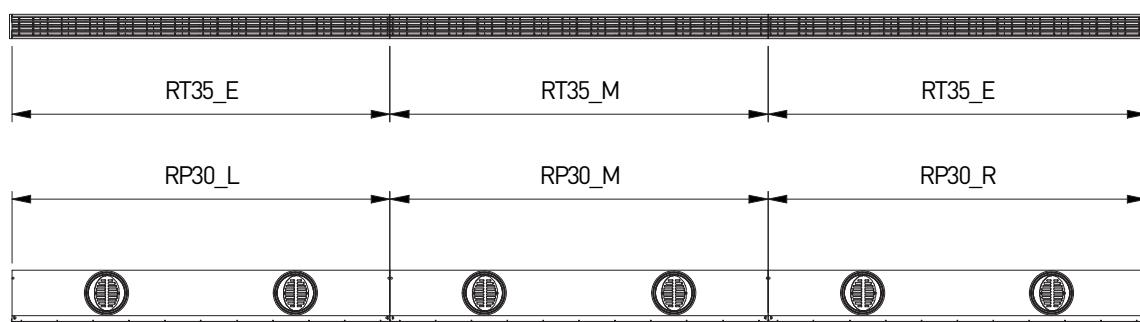
AIRFLOW DIRECTION



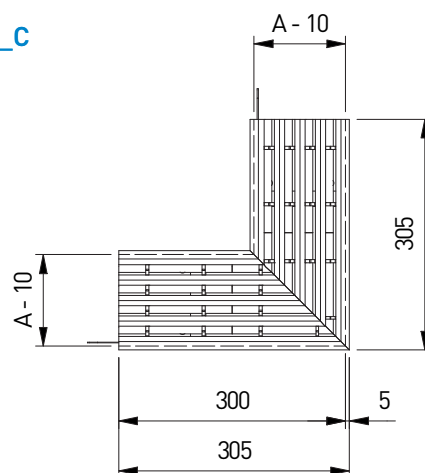
All dimensions in mm

L ≤ 1600: 1 diameter

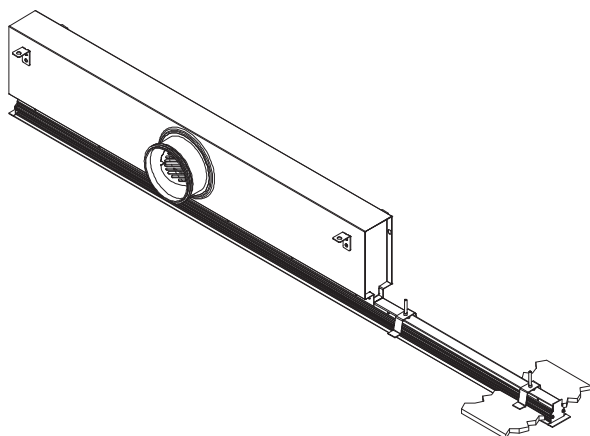
L ≥ 1601: 2 diameters



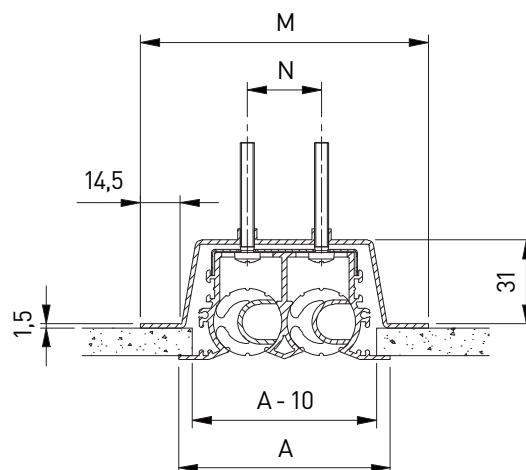
RT35_C



RT351-F/1500
+ RP301LS-D1/125/1000
+ BOBRT01/500
+ RT001 (2x)



RT352-F + RT012 (2x)



DIMENSIONS

	Number of slots - RT35 + RT01					
	1	2	3	4	5	6
A	50	77	104	131	161	188
M	78	105	132	159	188	216
N	0	27	54	81	109.6	137

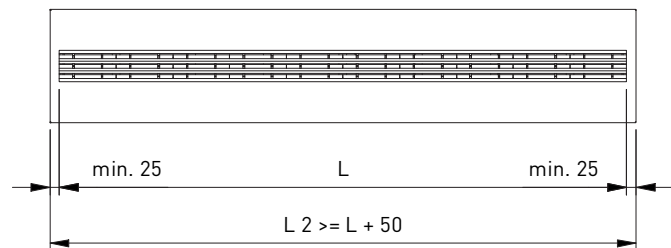
All dimensions in mm

L ≤ 1200: number of brackets = 2

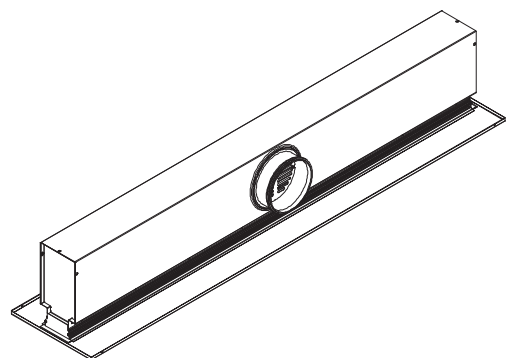
L > 1201: number of brackets = 3

PANEL VERSION

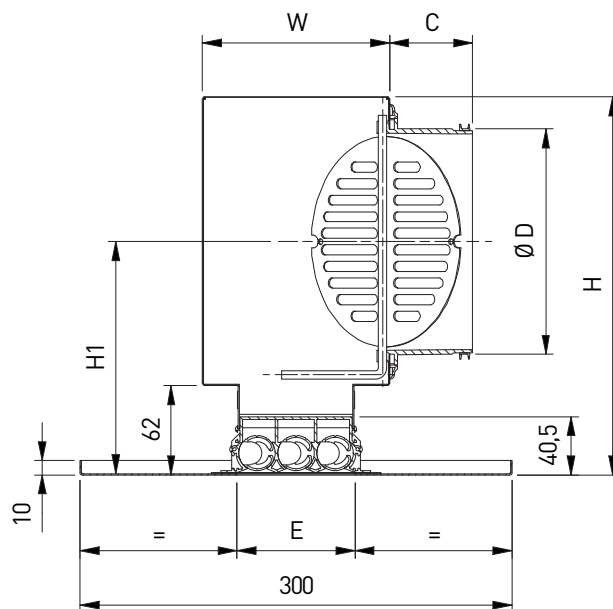
RT35_P



RT35_P + RP30_S



RT35_P + RP30_S



DIMENSIONS

	Number of slots - RT35_P/_Z + RP30_S					
	1	2	3	4	5	6
C	58	58	58	58	78	50
ØD	123	158	158	198	248	313
E	28	55	82	109	138	165
H	225	260	260	300	350	415
H1	145	162	162	182	207	249
W	75	102	129	156	186	213

All dimensions in mm

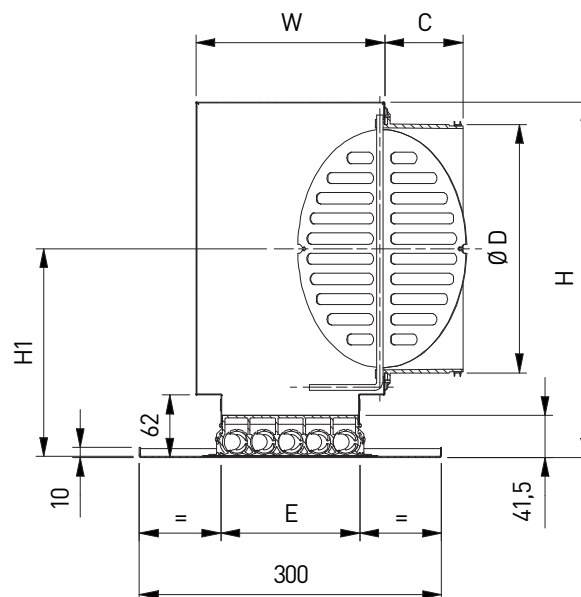
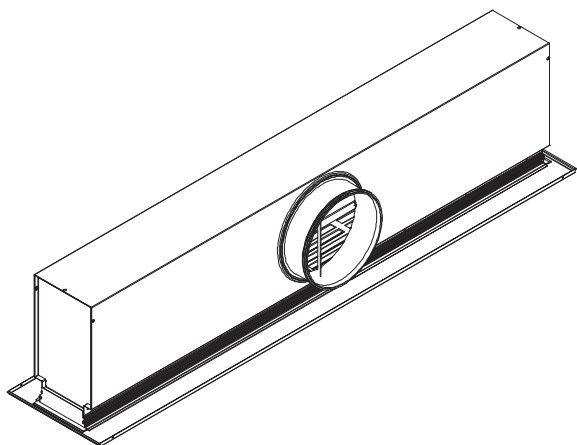
L ≤ 1600: 1 diameter

L ≥ 1601: 2 diameters

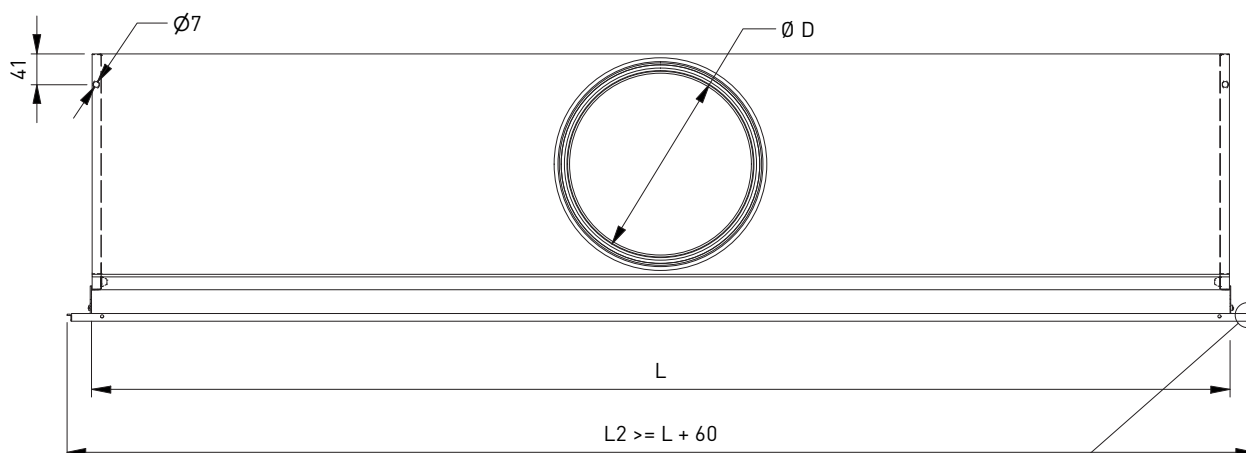
PANEL VERSION WITH FINE LINE

RT35_Z + RP30_S

RT35_Z + RP30_S



RT35_Z + RP30_S



FINE LINE ON TWO SIDES

