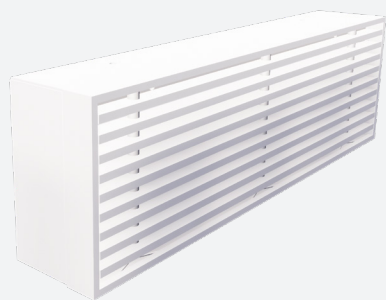


AG300_W

ALUMINIUM BAR GRILLE FOR WALL MOUNTING WITHOUT FLANGE



VARIANTS

AG300_W, AG320_W

Bar grille, suitable for the supply and exhaust of cooled or heated air, with straight bars or with 15° deflection. The grille has no flange and is suitable for wall mounting. Execution in aluminium, standard satin anodised finish.

Architectural finish without flange

Fixed bars, center distance between bars 12,5mm

Execution in aluminium, standard satin anodised finish

Easy to install



ADJUSTABLE



RECTANGULAR



WALL



1 WAY THROW



LINEAR



SUPPLY



EXHAUST

TECHNICAL INFORMATION

APPLICATION	Type	Linear, exhaust or supply
	Direction	Horizontal, fixed bars
CONSTRUCTION	Center distance between bars	12,5mm
	Min. length	100mm
	Max. length	2000mm
	Available steps in length	1mm
	Min. height	50mm
	Max. height	450mm
	Available steps in height	12,5mm
	Installation depth	74mm
MATERIAL	Standard material	Anodized aluminium
	Standard finishing	Satin anodized 11µm
	Product finishing options	Powder coating RAL of choice
MOUNTING	Mounting options	Concealed screw fixing

QUICK SELECTION

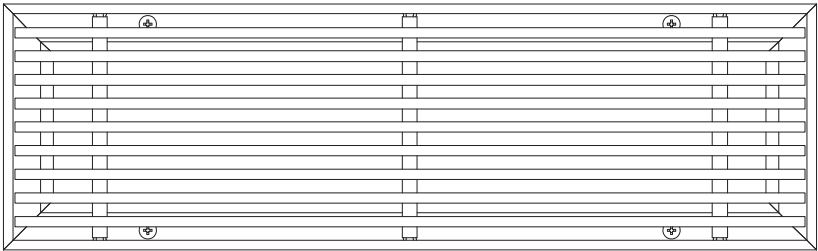
Supply Q _v [m³/h]		L [mm]							
H [mm]	L _w	200	250	300	400	500	600	800	1000
75	25 dB(A)	69	87	95	128	153	184	243	277
	35 dB(A)	115	145	157	214	255	306	398	454
100	25 dB(A)	95	113	128	171	205	246	322	367
	35 dB(A)	157	187	214	286	341	409	532	606
150	25 dB(A)	-	153	205	229	296	355	444	506
	35 dB(A)	-	255	341	382	494	593	739	843
200	25 dB(A)	-	-	-	324	382	458	561	675
	35 dB(A)	-	-	-	541	636	763	937	1119
250	25 dB(A)	-	-	-	-	442	530	655	747
	35 dB(A)	-	-	-	-	871	1045	1288	1468
300	25 dB(A)	-	-	-	-	561	673	795	949
	35 dB(A)	-	-	-	-	937	1124	1326	1579

PRODUCT KEY

A	G	3	0	0	-	-	0	6	0	0	0	3	0	0	W
							Nominal length L (mm): From 100 to 2000mm, per 1mm				Nominal height H (mm): From 50 to 450mm, per 12,5mm				
							-: Naturel anodised F: Coated								
							-: Grille in one piece E: End piece (for 0° deflection) M: Intermediate piece L: Left end piece (for 15° deflection) R: Right end piece (for 15° deflection)								
							0: Without damper 7: With damper GT007 (only standard version) 9: With damper GT009 (only without flow equalizer)								
							0: Grille with bars only 1: Grille with flow equalizer 2: Grille with bars 15° deflection 3: Grille with bars 15° deflection and flow equalizer								

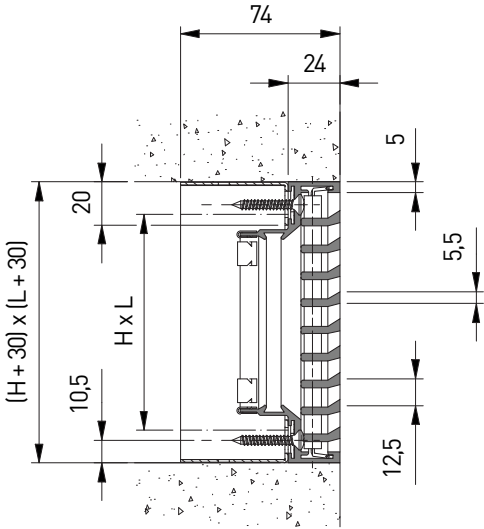
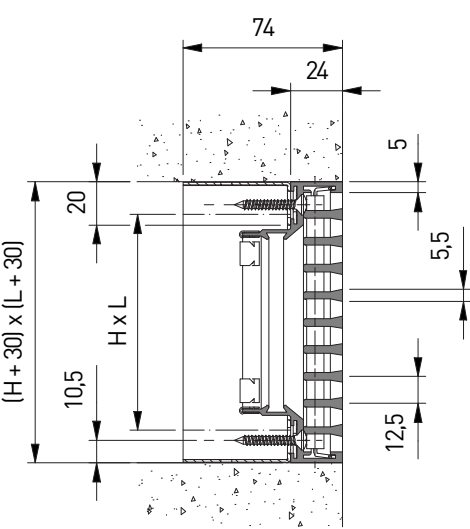
- GT007: Height \geq 75mm, length and height in multiples of 25mm

- GT009: Length \leq 750mm, and height = 50 or 62.5mm. Length AG309M and AG329M = 750mm



AG300_W

AG320_W



AG337_W

