

DC560

ADJUSTABLE PERFORATED CEILING DIFFUSER FOR SUPPLY



TECHNICAL INFORMATION

APPLICATION	Type	Supply
	Airflow direction	Horizontal, adjustable in 4 directions
CONSTRUCTION	Frontplate	Perforations Ø4,5mm, 51% free passage
	Available nominal sizes	Ø125, 160, 200, 250, 315mm
	Available panel sizes	594x594, 619x619mm
MATERIAL	Standard material	Powder coated sheet steel
	Standard finishing	Powder coating RAL9010
	Product finishing options	Powder coating RAL of choice
	Plenum	Galvanised (275g/m²) sheet steel
	Aansluiting plenum	PP/TPE spigot, Class D spigot with double lip seal
	Optionele isolatie	Melamine 6mm
MOUNTING	Montage opties	Suitable for modular T-bar ceiling system Plenum with side connection with mounting eyes (Ø 7mm)

VARIANTS

DC560_S, DC560_T

This high inducing perforated diffuser is designed for the supply of cooled or heated air with a vast temperature difference in respect to the room temperature. By adjusting the deflector plates it is possible to manipulate the air pattern in 1, 2, 3 or 4 directions. Specifically designed for installation in modular T-bar ceiling systems.

4 way adjustable air pattern

Flat, stable and equally divided,
horizontal air pattern

Suitable for modular T-bar ceiling systems

QUICK SELECTION

Supply Q _v [m³/h]			
ØN [mm]	L _w	DC560_S	DC560_T
125	25 dB(A)	145	140
	35 dB(A)	190	185
160	25 dB(A)	190	150
	35 dB(A)	275	215
200	25 dB(A)	310	240
	35 dB(A)	380	335
250	25 dB(A)	420	365
	35 dB(A)	540	470
315	25 dB(A)	595	560
	35 dB(A)	854	755

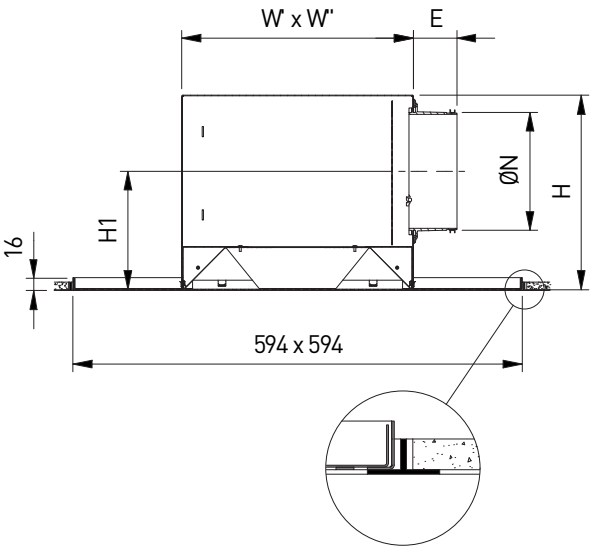
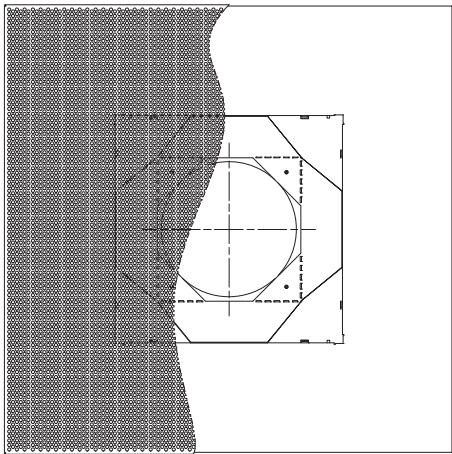
PRODUCT KEY

ADJUSTABLE PERFORATED CEILING DIFFUSER WITH PLENUM

D	C	5	6	0	-	F	S	-	-	0	0	2	0	0	0	5	9	4
											Nominal diameter N (mm): 125, 160, 200, 250, 315				Panel size (mm): 594, 619			
											0: Without mounting straps							
											-: Not available with damper							
											-: Non insulated plenum G: Insulated plenum							
											S: Side connection T: Top connection							
											F: Coated							

DC560_S

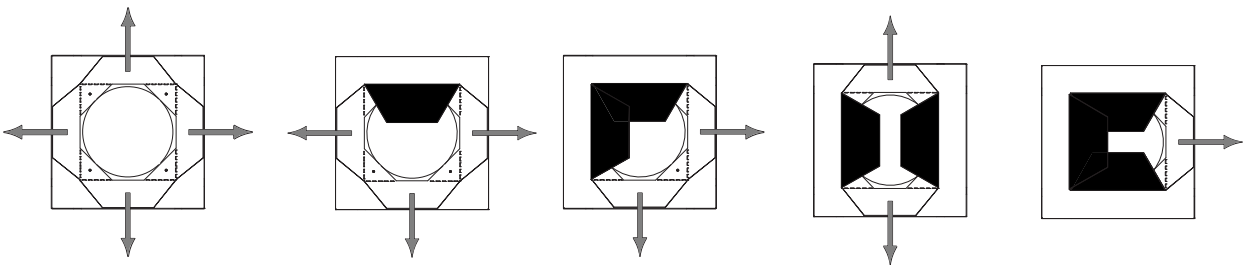
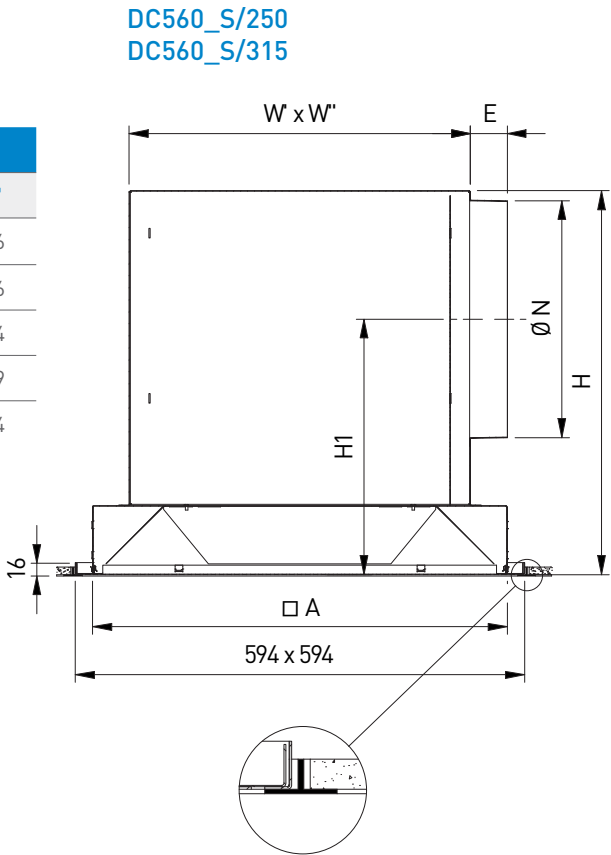
DC560_S/125
DC560_S/160
DC560_S/200



DIMENSIONS

ØN	A	E	H	H1	H2	W	W'	W''
125	239	58	221	139	35	240	240	266
160	304	58	256	156	35	305	305	336
200	381	58	301	181	35	382	382	414
250	547	58	401	256	50	547	375	399
315	547	49	507	338	47	547	450	474

All dimensions in mm



DC560_T

