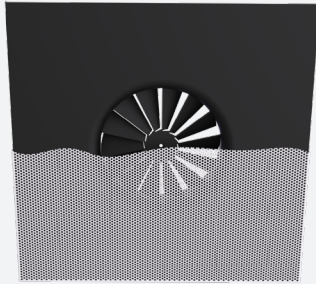


# WS360

PERFORATED DIFFUSER WITH SWIRL EFFECT



## VARIANTS

WS360, WS360\_S, WS360\_T

The swirl diffuser type WS360 is equipped with perforated frontplate. This way one benefits from the advantages of the swirl diffuser but still retains the discrete look of a perforated plate. A high induction is obtained through the excellent swirl effect. The diffuser ring guarantees a strong coanda effect over a wide temperature range (also at low flow rates) which makes it optimally suited for VAV applications. It is solely designed for installation in modular ceiling systems.

Advantages of a swirl diffuser with the discrete look of a perforated plate

High induction with strong coanda effect through diffuser ring

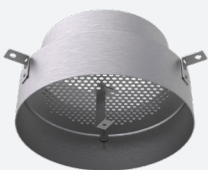
Only suitable for installation in modular system ceilings

Optimally suited for VAV applications

## ACCESSORIES



WP210S



WP210T

## TECHNICAL INFORMATION

APPLICATION	Type	Supply or exhaust
	Airflow direction	Horizontal
FRONTPLATE	Construction	Perforated plate with perforations Ø4,5mm, 51% free passage
	Standard panel size	594x594mm
	Standard material	Powder coated sheet steel
	Standard finishing	Powder coating RAL9010
	Product finishing options	Powder coating RAL of choice
	Mounting options	Only suitable for installation in modular system ceilings
SWIRL ELEMENT	Nominal sizes	Ø125, 160, 200, 250, 315, 400mm
	Standard panel size	594x594mm
	Standard material	Powder coated sheet steel
	Standard finishing	Powder coating RAL9005
TRANSITION PIECE WP200T/WP210T	Standard material	Brut aluminium
	Mounting options	Equipped with mounting straps
PLENUM WP200S/WP210S	Standard material	Galvanised [275g/m <sup>2</sup> ] sheet steel
	Spigot plenum	PP/TPE spigot, Class D spigot with double lip seal
	Insulation (optional)	Melamine 6mm
	Volume control (optional)	Galvanised perforated volume flow controller with manual operation
	Mounting options	Equipped with mounting eyes (Ø 7mm), mounting straps available upon request

## QUICK SELECTION

ØN [mm]	L <sub>w</sub>	Supply Q, [m <sup>3</sup> /h]		
		WS360	WS360 + WP210T	WS360 + WP210S
125	25 dB(A)	49	50	47
	35 dB(A)	69	69	66
160	25 dB(A)	86	82	71
	35 dB(A)	118	114	106
200	25 dB(A)	138	123	85
	35 dB(A)	191	170	136
250	25 dB(A)	205	200	176
	35 dB(A)	280	274	263
315	25 dB(A)	268	313	230
	35 dB(A)	389	428	341
400	25 dB(A)	436	420	371
	35 dB(A)	609	567	525

**EFFECTIVE AIR DISCHARGE AREA**

Supply A <sub>k</sub> [m <sup>2</sup> ]	ØN [mm]					
	125	160	200	250	315	400
	0,020	0,029	0,036	0,053	0,083	0,130

**PRODUCT KEY**

**PERFORATED DIFFUSER WITH SWIRL EFFECT**

W	S	3	6	0	-	F	0	2	5	0	0	5	9	4
---	---	---	---	---	---	---	---	---	---	---	---	---	---	---

Nominale Grootte ØN (mm):  
125, 160, 200, 250, 315, 400

Panelsize (mm):  
594

F: Coated

**TRANSITION PIECE WITH PERFORATED PLATE FOR AIR DISTRIBUTION**

W	P	2	1	0	T	0	2	5	0
---	---	---	---	---	---	---	---	---	---

Nominal size ØN (mm):  
125, 160, 200, 250, 315, 400

0: Without mounting bracket for central screw fixing  
1: With mounting bracket for central screw fixing

**PLENUM WITH PERFORATED PLATE FOR AIR DISTRIBUTION FOR SWIRL DIFFUSERS WITH CIRCULAR CONNECTION**

W	P	2	1	0	S	-	-	0	0	2	5	0	0	2	0	0
---	---	---	---	---	---	---	---	---	---	---	---	---	---	---	---	---

Nominal size ØN (mm):  
125, 160, 200, 250, 315, 400

Spigot ØD (mm):  
100, 125, 160, 200, 250, 315

0: Without mounting straps  
1: With mounting straps

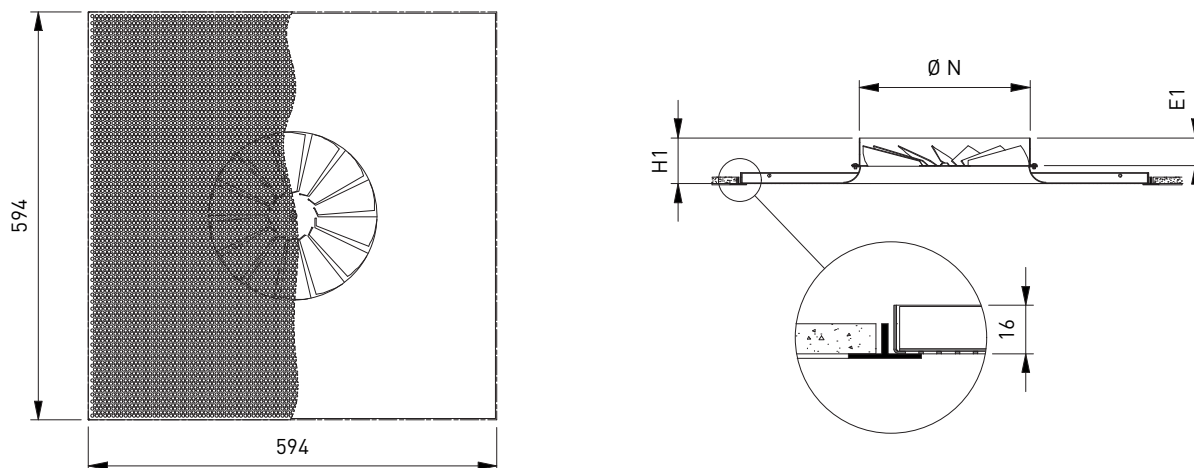
- : Without damper  
D : With damper

--: Non insulated plenum  
G: Insulated plenum

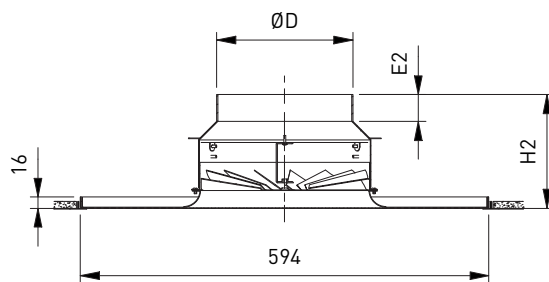
S: Side connection

0: Without mounting bracket for central screw fixing  
1: With mounting bracket for central screw fixing

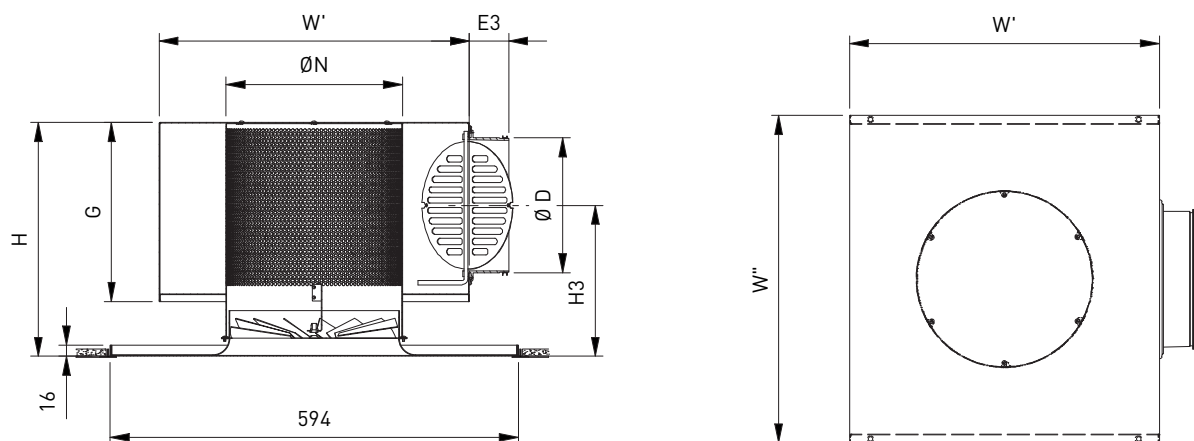
WS360

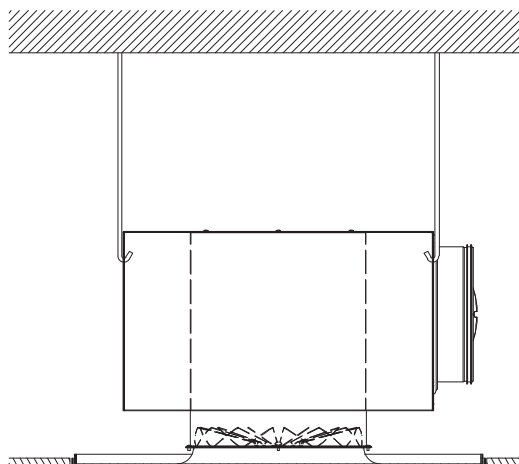
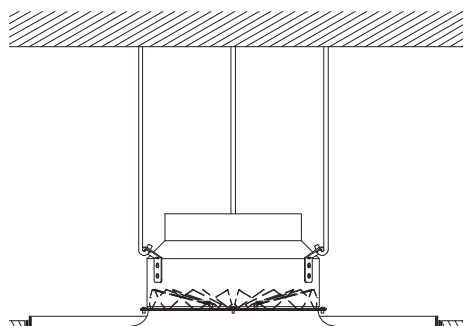


WS360 + WP210T



WS360 + WP210S-D0





## DIMENSIONS

ØN	ØD	E1	E2	E3	G	H	H1	H2	H3	W' x W''
125	100	29	39	52	160	225	55	140	165	275 x 301
160	125	35	39	58	185	258	63	153	176	325 x 351
200	160	43	39	58	220	305	75	165	206	375 x 401
250	200	45	39	58	260	346	76	171	227	450 x 476
315	250	50	39	78	310	412	92	195	268	500 x 526
400	315	47	40	50	375	528	118	253	360	600 x 626

All dimensions in mm