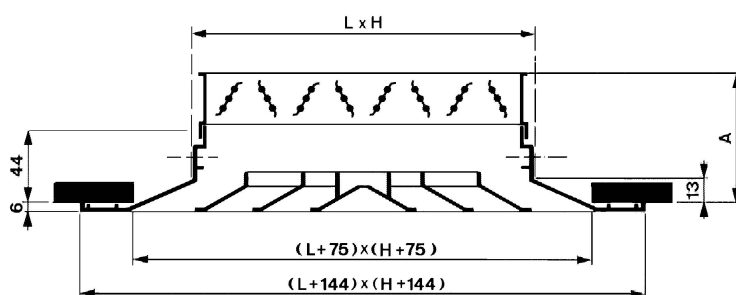


MULTIDIRECTIONAL DIFFUSER EE100

Installation dimensions

EE100 + GT007



H (mm)	150	225	300	375	450	525	600
L (mm)	150	-	-	-	-	-	-
	225	225	-	-	-	-	-
	300	300	300	-	-	-	-
	375	375	375	375	-	-	-
	450	450	450	450	450	-	-
	525	525	525	525	525	525	-
	600	600	600	600	600	600	600

Dimensions L x H: L= nominal length, H = nominal height
All dimensions in mm

Dimension	A
With damper GT007	82



Application

The diffuser type EE100 is used for the supply and exhaust of cooled or heated air in facilities such as offices, shopping centres, conference rooms, ...

The diffuser can be mounted in the ceiling and has a fixed 1-way horizontal air pattern.

Technical information

Characteristics:

- Square or rectangular diffuser available with multiples of 75 mm in length and 37,5 mm in height
min L = 150 mm, max L = 1200 mm
min H = 75 mm, max H = 600 mm
- Fixed 1-way horizontal air pattern
- Removable core with several air distribution elements.
It is possible to exchange the cores of the EE200 and EE400, in accordance with the desired air pattern.

Construction:

extruded aluminium; natural tone, satin anodised

Specifications description

Example:

Square or rectangular aluminium diffuser with fixed inner blading (one-way), complete with a damper. The diffuser is natural tone anodised.

Type: EE100 + GT007
size (L x H): ... x ... mm

Accessories

- **GT007:** Opposed blade damper. Galvanised steel sheet, painted black.

For further information, see p. 1 290

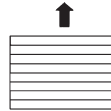
Fixing

with screws in the diffuser neck.

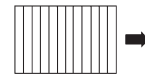
Delivery possibilities



Square diffuser EE100



Rectangular diffuser EE100



Rectangular diffuser EE120

How to order

EE100 size 375 x 375 mm with damper GT007

E	E	1	0	7	-	-	0	3	7	5	0	3	7	5
							L				H			

0: without damper
7: with damper

type of diffuser: see 'Delivery possibilities'