

# W-800

## ALUMINIUM EXTERNAL LOUVRE



RECTANGULAR



OUTDOOR



WALL



1 WAY THROW



### VARIANTS

WA800, WB800

The aluminium external louvre, type W-800, is suitable for the intake or exhaust of large air volumes in airhandling systems. The Z-shaped blades with 80mm step provide good protection against rain. Available in two executions, with or without pre-drilled screw holes in the frame. Optionally several types of insect or bird screens are available.

### Weatherproof

Z-shaped blades under 45° with 80mm step

Bottomblade with drip cill

### ACCESSORIES



WR001

### TECHNICAL INFORMATION

APPLICATION	Type	Intake or exhaust
CONSTRUCTION	Center distance between blades	80mm, 45° deflection
	Min. Length	200mm
	Available steps in length	1mm
	Min. Height	300mm
	Available steps in height	10mm
	Max. length/height (unpainted)	3000x2200 or 2200x3000mm
	Max. length/height (painted version)	2900x1700 or 1700x2900mm
MATERIAL	Standard material	Anodized aluminium
	Standard finishing	Satin anodized 11µm
	Product finishing options	Powder coating RAL of choice
MOUNTING	Mounting options	With or without pre-drilled screw holes in the frame, mounting frame with wall anchors optionally available

### EFFECTIVE AIR DISCHARGE AREA

Soufflage/Reprise A <sub>e</sub> [m²]										
H [mm]	L [mm]									
	400	500	600	800	1000	1200	1400	1600	1800	2000
400	0.08	0.10	0.12	0.17	0.21	0.25	0.29	0.33	0.38	0.42
500	0.11	0.14	0.16	0.22	0.28	0.33	0.39	0.44	0.50	0.56
600	0.14	0.17	0.21	0.28	0.35	0.42	0.49	0.56	0.63	0.70
800	0.19	0.24	0.29	0.39	0.48	0.58	0.68	0.78	0.88	0.97
1000	0.24	0.31	0.37	0.50	0.62	0.75	0.87	1.00	1.13	1.25
1200	0.30	0.37	0.45	0.61	0.76	0.91	1.07	1.22	1.38	1.53
1400	0.35	0.44	0.53	0.72	0.90	1.08	1.26	1.44	1.63	1.81
1600	0.41	0.51	0.62	0.83	1.04	1.25	1.46	1.67	1.88	2.09
1800	0.46	0.58	0.70	0.94	1.17	1.41	1.65	1.89	2.13	2.36
2000	0.51	0.65	0.78	1.05	1.31	1.58	1.84	2.11	2.38	2.64

## QUICK SELECTION

Q <sub>v</sub> [m³/h] Intake - v <sub>eff</sub> =2,0m/s										
H [mm]	L [mm]									
	400	500	600	800	1000	1200	1400	1600	1800	2000
400	576	720	864	1224	1512	1800	2088	2376	2736	3024
500	792	1008	1152	1584	2016	2376	2808	3168	3600	4032
600	1008	1224	1512	2016	2520	3024	3528	4032	4536	5040
800	1368	1728	2088	2808	3456	4176	4896	5616	6336	6984
1000	1728	2232	2664	3600	4464	5400	6264	7200	8136	9000
1200	2160	2664	3240	4392	5472	6552	7704	8784	9936	11016
1400	2520	3168	3816	5184	6480	7776	9072	10368	11736	13032
1600	2952	3672	4464	5976	7488	9000	10512	12024	13536	15048
1800	3312	4176	5040	6768	8424	10152	11880	13608	15336	16992
2000	3672	4680	5616	7560	9432	11376	13248	15192	17136	19008

Q <sub>v</sub> [m³/h] Discharge - v <sub>eff</sub> =3,0m/s										
H [mm]	L [mm]									
	400	500	600	800	1000	1200	1400	1600	1800	2000
400	864	1080	1296	1836	2268	2700	3132	3564	4104	4536
500	1188	1512	1728	2376	3024	3564	4212	4752	5400	6048
600	1512	1836	2268	3024	3780	4536	5292	6048	6804	7560
800	2052	2592	3132	4212	5184	6264	7344	8424	9504	10476
1000	2592	3348	3996	5400	6696	8100	9396	10800	12204	13500
1200	3240	3996	4860	6588	8208	9828	11556	13176	14904	16524
1400	3780	4752	5724	7776	9720	11664	13608	15552	17604	19548
1600	4428	5508	6696	8964	11232	13500	15768	18036	20304	22572
1800	4968	6264	7560	10152	12636	15228	17820	20412	23004	25488
2000	5508	7020	8424	11340	14148	17064	19872	22788	25704	28512

## PRODUCT KEY

## ALUMINIUM EXTERNAL LOUVRE WITH 80MM STEP

W	A	8	0	3	-	-	1	0	0	0	1	0	0	0
							Nominal length L (mm): From 200 to 3000mm, per 1mm				Nominal height H (mm): From 300 to 3000mm, per 10mm			
							-: Anodized F: Coated							
							-: Standard L: Left end piece R: Right end piece M: Intermediate piece							
							0: Grille without insect screen 2: Grille with grey fibreglass insect screen, mesh size 1,6x1,4mm( not available in painted version) 3: Grille with galvanised steel bird screen, mesh size 12,7x12,7mm 4: Grille with stainless steel bird screen, mesh size 11,7x11,7mm							
							A: Frame with screw holes B: Frame without screw holes							

## Notes:

Non-painted grilles max 3000x2200mm or 2200x3000mm

Painted grilles max 2900x1700mm or 1700x2900mm

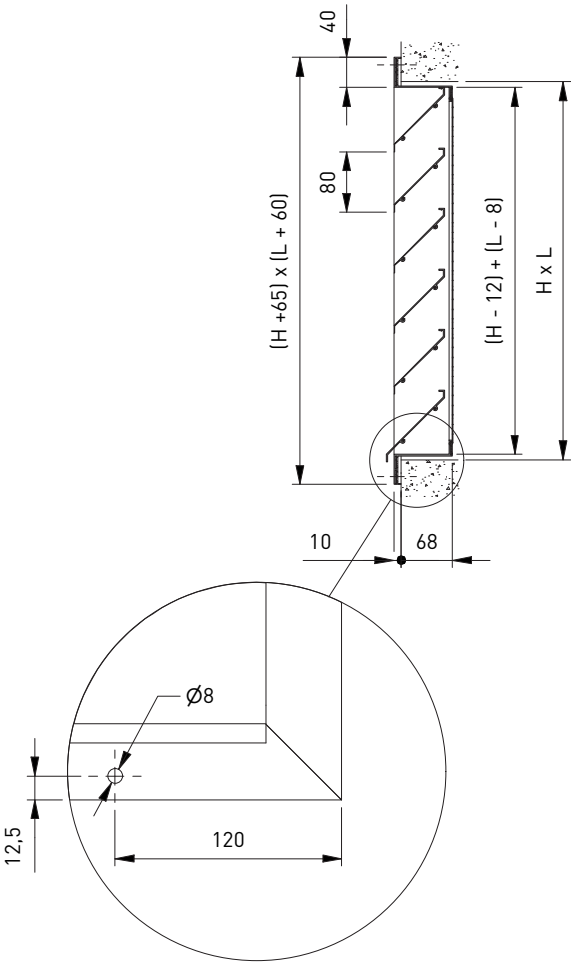
## MOUNTING FRAME WITH WALL MOUNTING STRAPS

W	R	0	0	1	-	1	0	0	0	1	0	0	0
						Nominale length L (mm): From 200 to 2300mm, per 1mm				Nominal height H (mm): From 200 to 2300mm, per 1mm			
						-: Standard E: End piece M: Intermediate piece							
						1: Black painted mounting frame made of profile steel 30x30x4mm, with masonry anchors							

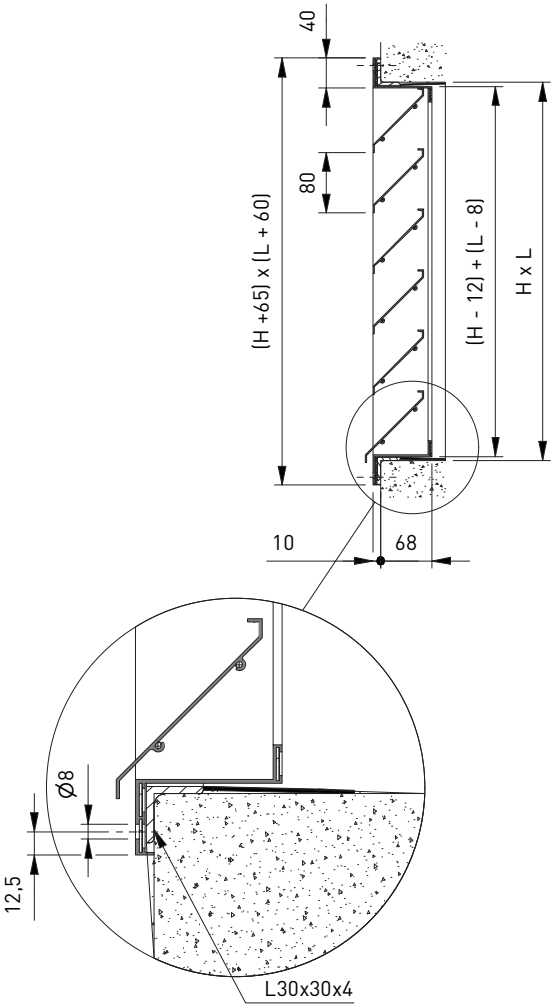
## Notes:

Attention: Without pre-drilled screw holes

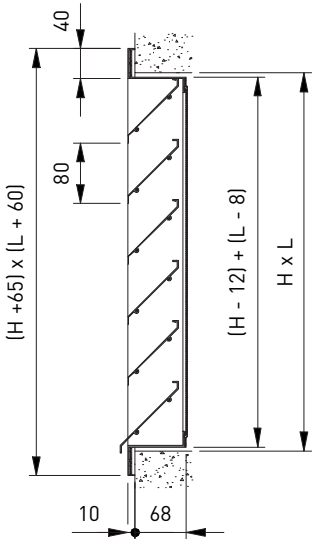
WA800

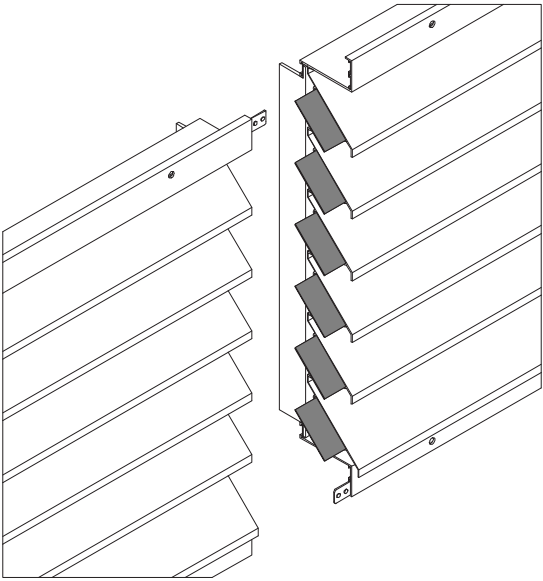
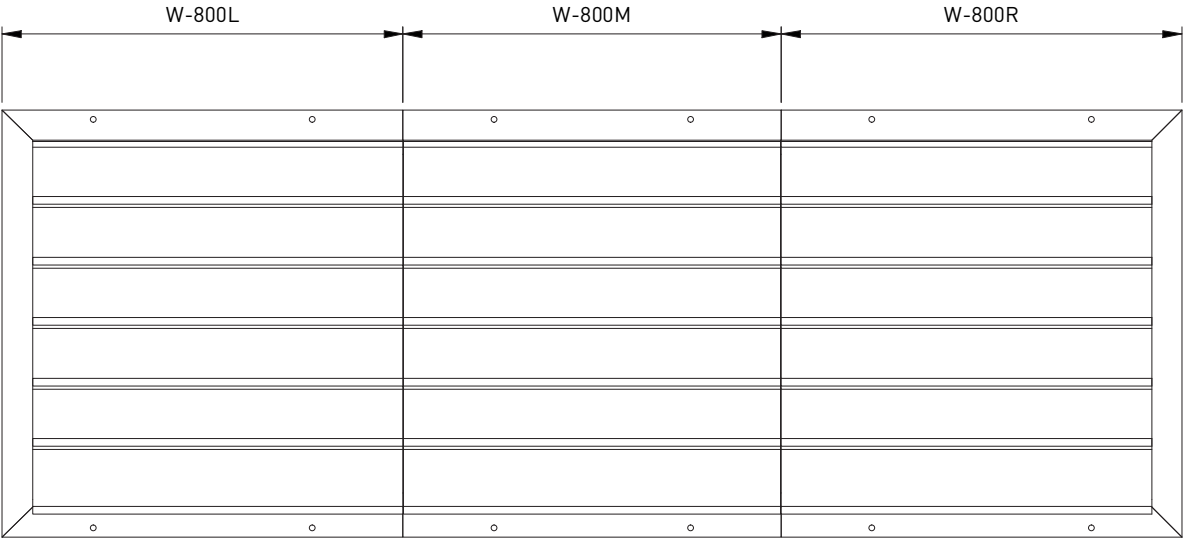


WA800 + WR001



WB800





SCREW HOLE LOCATION IN THE FRAME

